

TRAILER-MOUNTED BOOMS



3522 A - 3632 T
4527 A - 5533 A
6543 A

Access on the move

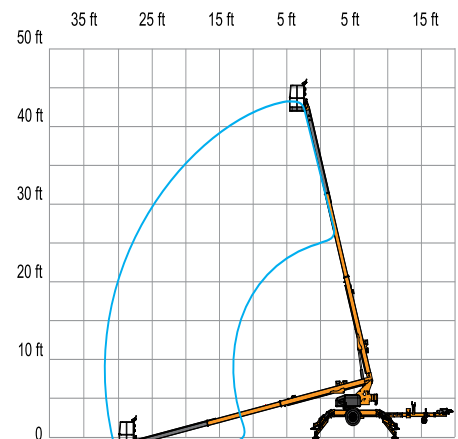
- Hydraulic outriggers and automatic leveling allow operation in under 30 seconds
- Superior combination of industry leading capacity and outreach
- Can be towed by a standard half-ton pickup truck - No commercial driver's license needed

Exceptional productivity

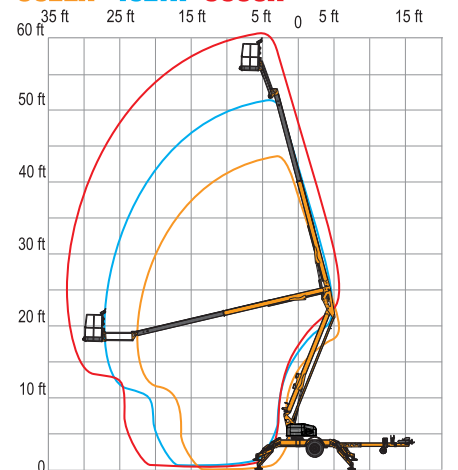
- Air / water lines and 110V GFI protected power to the platform



3632T



3522A 4527A 5533A



Haulotte ➤
GROUP

More than lifting

www.haulotte-usa.com



3522 A - 3632 T - 4527 A - 5533 A - 6543 A

TRAILER-MOUNTED BOOMS

TECHNICAL DATA

| | | | | | |
|--|-----------------------|------------|------------------|------------|---------------|
| Working height | 41 ft 9 in | 43 ft 6 in | 51 ft | 61 ft 3 in | 71 ft |
| Platform height | 35 ft 9 in | 37 ft 6 in | 45 ft | 55 ft 3 in | 65 ft |
| Horizontal outreach (from centerline) | 22 ft 6 in | 32 ft | 27 ft | 33 ft 5 in | 43 ft |
| Horizontal outreach (from edge of footpad) | 17 ft 5 in | 27 ft | 21 ft | 27 ft 4 in | 37 ft |
| Up and over height | 19 ft | N/A | 20 ft 9 in | 23 ft 1 in | 15 ft 11 in |
| Lift capacity | 500 lbs | | | | |
| A - Length - stowed | 16 ft 3 in | 22 ft 8 in | 20 ft 8 in | 23 ft 8 in | 24 ft |
| B - Width stowed | 5 ft 6 in | | | 5 ft 7 in | 5 ft 11 in |
| C - Height stowed | 6 ft 8 in | | | 6 ft 9 in | 7 ft |
| D x E - Platform size | 4 ft 1 in x 2 ft 9 in | | | | |
| F - Widest Point | 11 ft 10 in | 13 ft 9 in | 13 ft 9 in | 14 ft 8 in | 12 ft 11 in |
| G - Widest Point | 12 ft 2 in | 13 ft 6 in | 13 ft 6 in | 15 ft | 12 ft 9 in |
| Turntable rotation | 350° non-continuous | | | | |
| Jib - length | 4 ft 3 in | N/A | 4 ft 3 in | | |
| Jib - Vertical Motion | 150° (+70 / -80) | N/A | 150° (+70 / -80) | | |
| Tow speed rating | 65 mph | | | | |
| Leveling capability | 12.5 ° | | | | |
| Tire size | ST 225/75 D15 | | ST 225/75 R15 | | ST 235/80 D16 |
| Power source | 4 x 6 V 245 amp-hr | | | | |
| Tongue weight (no options) | 245 lbs | 200 lbs | 290 lbs | 335 lbs | 400 lbs |
| Weight (no options) | 3400 lbs | 4440 lbs | 4200 lbs | 4800 lbs | 7700 lbs |

STANDARD EQUIPMENT

- Hydraulic outriggers
- Tilt alarm/sensor
- Hour meter and battery condition indicator
- Automatic leveling system and self-leveling platform
- 110V GFI protected outlet to platform and base
- Easy to use controls
- Air and water line to platform
- Inboard 25 amp charger
- Integrated forklift pockets
- Hydraulic surge brakes (trailer)

OPTIONS & ACCESSORIES

- Material lifting hook
- Spare tire and mounting kit
- DC / Gas hybrid
- Manual platform rotator - 120° stop point to stop point
- Flashing beacon
- Fluorescent tube caddy
- Combination hitch
- Tool tray
- Electric brakes (trailer)
- Drive and Set

