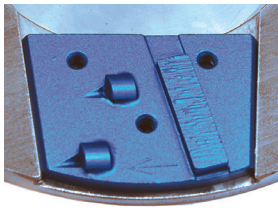


Concrete Grinding Dovetail Trapezoids



Dovetail trapezoids slip into the adapter and are pushed to the outer edge of the magnetic plate to secure the tool. Also can be bolt on.

The single and twin round segments have a rounded edge which reduces scratches and provides a smoother finish. Use for the first steps in polishing concrete and for removal of thin coating and mastic removal.



161910



Single Round Dovetail Trapezoids

Grit	Soft Bond	Med Bond	Hard Bond
18/20	161903	161908	161913
25	161904	161909	161914
30/40	161905	161910	161915
60/80	161906	161911	161916
120	161907	161912	161917



161925



Double Round Dovetail Trapezoids

Grit	Soft Bond	Med Bond	Hard Bond
18/20	161918	161923	161928
25	161919	161924	161929
30/40	161920	161925	161930
60/80	161921	161926	161931
120	161922	161927	161932



162305



162304

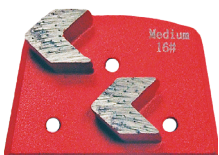


Single and Double Segmented

The single and double segments are available in two grits in a medium bond for general purpose applications.

Rectangular Segment Dovetail Trapezoids

Grit	Single Med. Bond	Double Med. Bond
18/20	162428	162427
35/40	162305	162304



162347



Arrowhead Dovetail Segments

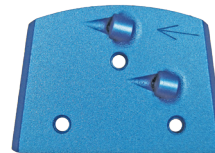
The arrow-shaped segments are angled slightly allowing the segment to "plow" thru and remove thin surface treatments such as paints, epoxies, mastics, etc. Segments have more sharp edges for better coating removal on planetary machines. Can be used RH or LH.

Arrowhead Dovetail Trapezoids

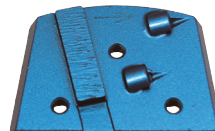
Grit	Extra Soft Bond	Soft Bond	Med Bond	Hard Bond	Extra Hard Bond
6	162340	162343	162346	162349	162352
16	162341	162344	162347	162350	162353
30	162342	162345	162348	162351	162354



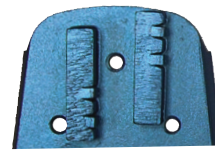
162595



162001



162004



162533



PCD Dovetail Trapezoid Coating Stripper

Two long lasting large round PCD chips for fast, aggressive removal of coatings including epoxies. These segments remove coatings without gumming up and smearing for a very fast production rate. Available with a wear bar that works as a depth guide for a uniform surface.

PCD Dovetail Segments

Description	Part Number
PCD - 2 segments - crushed chips	162595
PCD - 2 whole round - RH	162001
PCD - 2 whole round - LH	162002
PCD - 2 whole round with wear bar - RH	162003
PCD - 2 whole round with wear bar - LH	162004
PCD - 2 segments bar - RH	162532
PCD - 2 segments bar - LH	162533

RH - Right Hand LH - Left Hand

Wear bar is 30 grit diamond segment



162538



900138



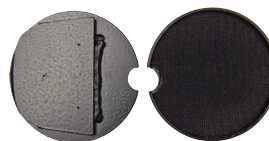
160309

Carbide Scraping Mounting Block and Chips

Four sided carbide chip provides 8 surfaces for removing soft coatings like carpet glues and rubber backed adhesives. Can be right or left hand depending on placement of chip on block.

Carbide Scraping Mounting Block and Chips

Description	Part No.
TEQ-Lok Carbide Mounting Block on Dovetail	162538
Low Profile Flathead Steel Mounting Screw	900138
Carbide Replacement Chip - 8 sided	160309



162602

Dovetail Pad Driver System

Description	Part No.
3" velcro pad driver	162602